

INVITATION TICKET

- You will be required to pay 2,000 JPY without the invitation ticket and your business card.
- Please submit the invitation ticket with your business card at the reception counter.
- One invitation ticket is valid for one person.
- Copy is allowed.

Largest Exhibition of Sports & Fitness Industry in Japan

SPORTEC 2018

Date: JULY 25th[Wed.] – 27th[Fri.], 2018

JULY25th&26th: 10:00AM-6:00PM JULY27th: 10:00AM-5:00PM

Venue: Tokyo Big Sight - WEST HALL 1·2·3·4+Atrium

Organized by TSO International Inc.

Web: <https://www.sports-st.com/en/>

The organizer is pleased to invite you at the shows.

TSO International Inc.

TEL +81-3-6273-0403 Email info@sports-st.com



What is SPORTEC ?

**Japanese sports market will expand to 15 trillion yen industry in the future!
Health promotion / Sports industry are the business which have a high-attention.**

Sports agency, which is for promoting sports, established in 2015, and sports related market is growing up rapidly for Tokyo Olympic 2020. A fitness market and studio administration markets for yoga and Pilates are increasing, moreover sports supply and tourism market are also expanding its market scale since "active senior" people from aged society participate in the marathon and walking race. Japan advocates the expansion of sports and the health related markets as one of the national strategy. The range of the market include as well as fitness and sports experience, tourism, watching sports, beauty, a diet market and the health improvement market of the elderly person. According to Japan revival strategy 2016, they set the target 15 trillion yen that is a scale of 3times from current sports-related market of 5,500 billion yen(2015) in 2025. In addition, the numerical target of 65% from 40.4%(2015) of sports fact rate(adults more than once a week) in 2025, the sports-related business enlarges rapidly by creating a person and opportunity and place playing sports. Sports-related investment will concentrate in the all over Japan more and more in future and with the holding of international mega sporting events such as Rugby World Cup 2019, Tokyo Olympics/Paralympics 2020, WORLD MASTERS GAMES 2021 KANSAI, and then the sports-related market is expected to continue growing up. The sports market receives the holding of growth support of the government and the international mega sporting event, the boom of the sports and fitness market, expansion of health and the beauty industry, and it is expected high market growth with medical and IOT industry in Japan. All key items to let succeed the sports business are available at SPORTEC. For the future of the sports business, for expanding your business, please join to SPORTEC.

EXHIBITION AREA

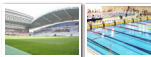
FITNESS MACHINE AREA



SPORTS WEAR & SPORTING GOODS AREA



SPORTS FACILITY AREA



SPORTS EVENT SERVICE AREA



HOME HEALTH CARE & DIET PRODUCT AREA



RELAXATION AREA



PREVENTIVE CARE AND ELDERLY REHABILITATION AREA



WELLNESS FOOD JAPAN



Access Information

By Limousine Bus

<http://www.limousinebus.co.jp/en/>

HANEDA Airport



Approx. 25min.

NARITA Airport



Approx. 60min.

Tokyo Bay Ariake Washington Hotel

Approx. 5min. by Walk

TOKYO BIG SIGHT

Tokyo Big Sight Access 3-11-1 Ariake, Koto-ku, Tokyo 135-0063, JAPAN

Please fill out the following survey questionnaire before you register at the reception counter.

1. Nationality

*Please write your nationality

2. Industry field (Multiple choices are allowed)

- A. Sports / Fitness facility management B. Nursing care / Welfare / Medical facility C. School / Intensive sports school or related facility D. Sports goods store / Internet shopping E. Sports leisure
 F. SPA / Hotel G. Wholesales / Distribute H. Fitness instructor / Trainer I. Architect / Layout design / Construct J. Sports goods / Machines manufacture K. Food / Beverage manufacture
 L. Government / Association M. Event organizer / Planner / Agency N. General visitor / Student

3. For whom picked more than one above.

Q. Which one is your main field? Please answer by alphabet: []

4. Position (Please pick one)

- CEO / President / Owner Board member Managing Director Division Manager Assistant Manager
 Staff Part-time employee Other []

5. How are you involved in decision making to introduce new products and services? (Please pick one)

- I play the main role I am involved I am NOT involved

6. Purpose of visiting (Multiple choices are allowed)

- To introduce the products and service(★) To reduce the cost
 To renovate the facility or establish a new facility Develop new product or select OEM Supplier
 To start new business To collect information or Training To expand the industry network
 Other []

★Please answer the questions below if you picked "To introduce the products and service" above the question.

7-1. When is your company planning to introduce the products and service?

- Within six months Within from six months to one year Within from one year to three years Undecided
 I am NOT involved

7-2. How much is the budget for introducing the product and service?

- Less than 5 million yen More than 5 million yen less than 30 million yen
 More than 30 million yen less than 50 million yen More than 50 million yen less than 1 billion yen
 More than 1 billion yen Undecided I am NOT involved

8. The year of 2019

- I consider to book for () Booth/s I would like to receive more information
 I would like to receive the invitation ticket.

Please attach your business card here

You will be required to pay 2,000 JPY without your business card. Thank you.

Thank you for your visit at Our Show !